

# Advancing Obesity Care

## Considerations for Health Systems

### Obesity care pathway implementation and service line development

Created by Novo Nordisk, leveraging internal Novo Nordisk insights and using the American Medical Group Association (AMGA) Obesity Care Model Playbook, Wisconsin Collaborative for Healthcare Quality (WCHQ) tools, and the Plan-Do-Study-Act (PDSA) method from the Agency for Healthcare Research and Quality.

#### Assess readiness and resources

- Assess existing infrastructure, (eg, staffing, technology, and training capabilities) needed to support implementation
- Early in the process, engage key stakeholders who will be a part of the obesity service line, or involved in the care pathway, to evaluate the pathway for feasibility and secure their support



#### Develop an obesity pathway implementation plan

- Establish scope of initial rollout (eg, pilot clinics or system-wide)
- Determine timelines, roles and responsibilities, and communication channels



#### Integrate obesity pathway into the electronic health record (EHR)

- Modify or update the EHR system to support standardized documentation of obesity diagnosis and treatment using standardization tools such as dot phrases/ SmartPhrases
- Incorporate decision support tools and reminders, such as obesity Best Practice Alerts (BPAs), to facilitate adherence to the pathway and appropriate medication use

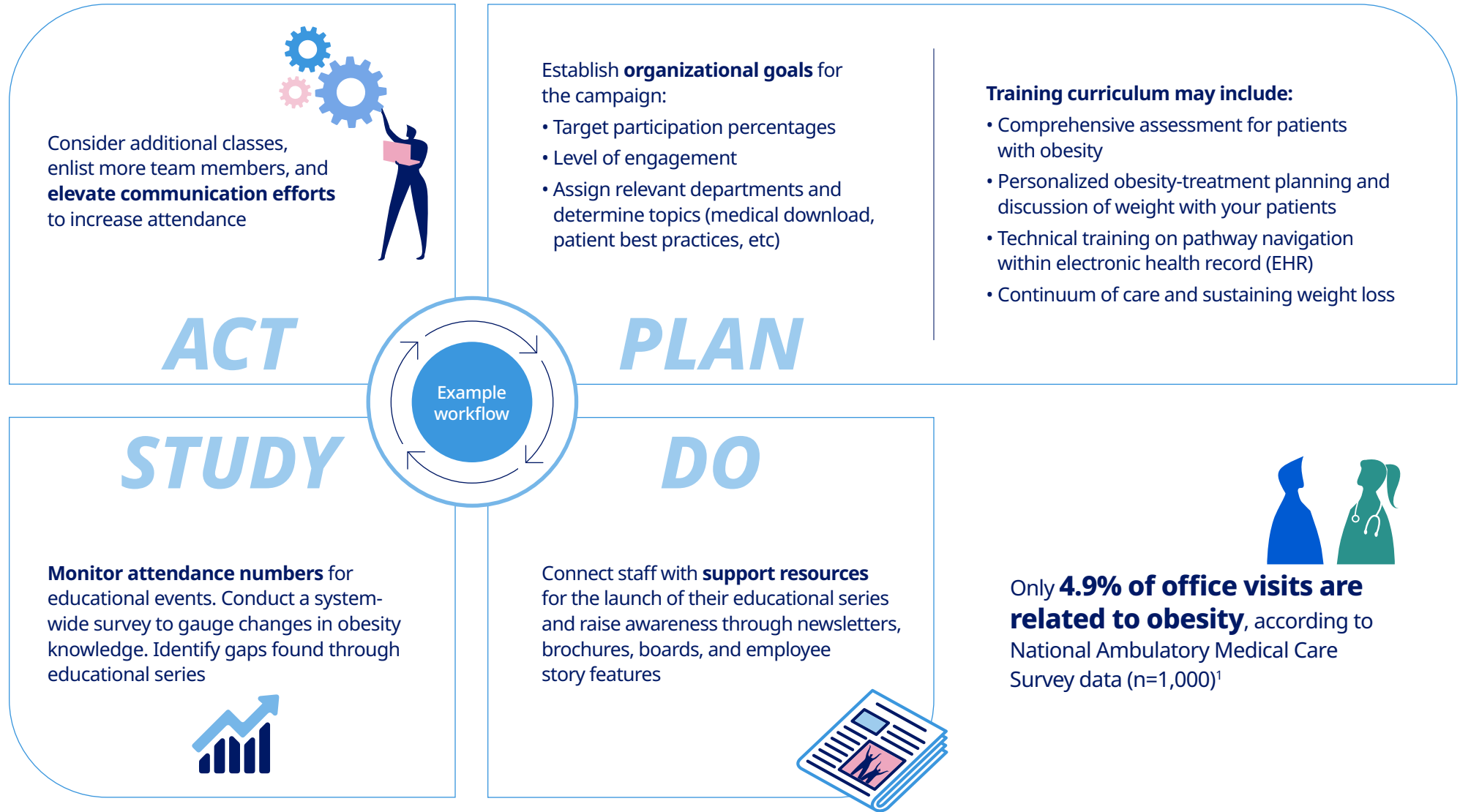


#### Initiate communication and education campaign to socialize the pathway

- Offer comprehensive standardized education and training programs to ensure familiarity with obesity pathway rationale and treatment protocol



# Developing a systemic obesity education campaign



Source: 1. Talwalkar A, McCarty F. Characteristics of physician office visits for obesity by adults aged 20 and over: United States, 2012. NCHS Data Brief No. 237. Published March 2016. Accessed January 28, 2022. <https://www.cdc.gov/nchs/data/databriefs/db237.pdf>

Epic and SmartPhrases are trademarks of Epic Systems Corporation.

